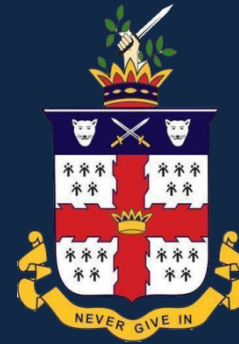


# The Lawrence College Project . . . 2010

*A pictorial*



**Celebrating  
150 years of Excellence**

**The Clock Tower & Time Capsules  
Presented by Old Gallians  
to**

**Lawrence College**

**October 2010**



**The sprawling 150 acres of the picturesque Campus**

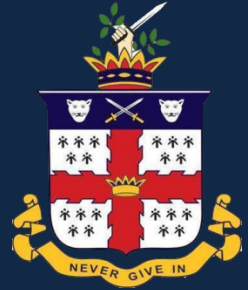






*Proposed Site for  
Time Capsule  
& Clock Tower*





Specifications of

*Smith of Derby*

Mechanism for LCGG Project



## **Roman Skeleton Dial Clocks**

Specially fabricated maintenance free Dials with Roman numerals & minute track.

Glazed with florescent back lit Dial apertures

Aluminium counterbalanced Hands

## **Synchronous Clock Movements**

Heavy duty synchronous electric clock movements with accuracy of +/- 1 second per month.

- Corrosion resistant steel plated casings
- Pre-lubricated long life bearings
- Precision machined brass gear wheels
- Bronze bearings
- Operating temperatures of plus 53 C degrees and below minus 20 C .



## **Power Failure Backup System**

- A GPS Permanent Inverter charger unit, offering up to 24 hr power failure back up.
- GPS Time signals from Global Positioned Satellites for time controller accuracy.

## **Electronic Bell Sound Chiming System**

120W Bell Sound System with high fidelity amplifier

4 Large horn speakers system offering the following:

- Hour striking
- Westminster chimes on the quarter hours
- Single bell tolling
- National Anthem playing
- Pre programmed or manual control of C240 logic controller
- Night silencing programmed to suit requirements.
- A public address system for daily school assembly, flag hoisting in the morning & flag breaking at sunset
- Programmed bell indications for daily school activity from morning wake-up to lights out at night



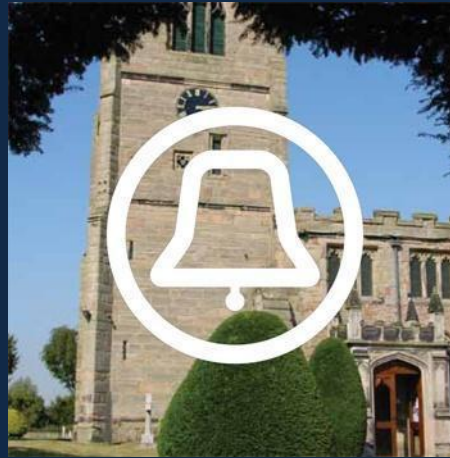
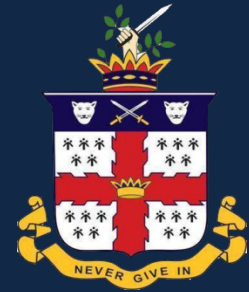
## **Fully integrated Public Address System**

Equipped with a pair of sophisticated Wireless Mics; good for use from the pavilion of Jamali Stadium below and the entire frontal parameter of the main Senior School building above. Also with one wired Mic for morning Assembly and other Public Address disciplines

## **Built-in options for indicating School Roster**

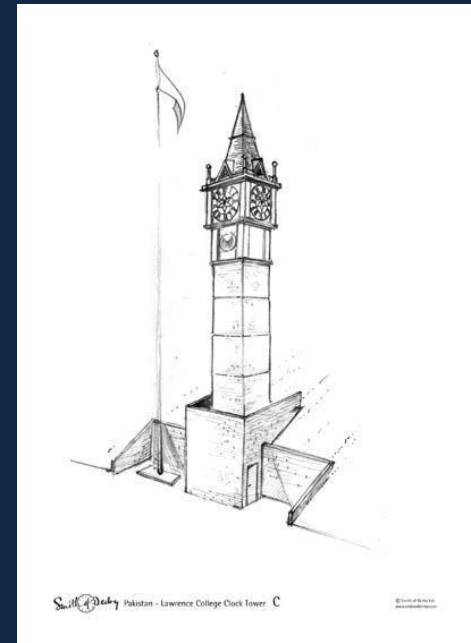
Entire year-round School routine from morning wake-up call to lights-out at night and every activity (academic and/or sports) in-between can be programmed. Hammering of the school bell can be taken over by this unique state of the art system.





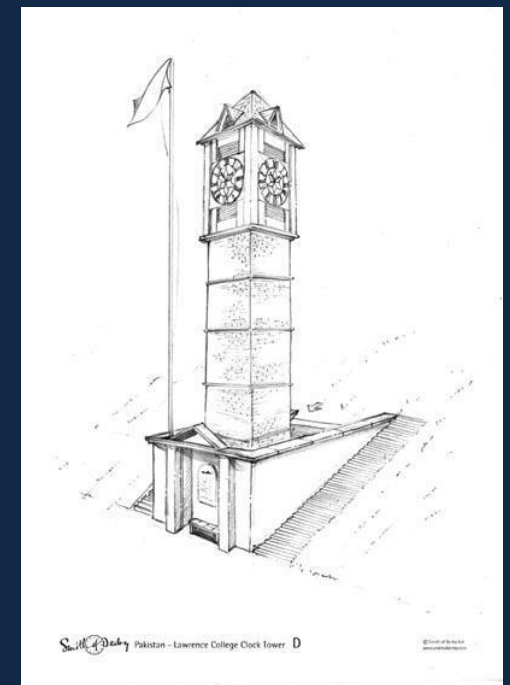
Westminster Chimes demonstration

For demonstration of Smith of Derby Bell Sound System please click on the *bell symbol* above



South of Derby Pakistan - Lawrence College Clock Tower - C

© South of Derby Ltd  
www.southofderby.com



South of Derby Pakistan - Lawrence College Clock Tower - D

© South of Derby Ltd  
www.southofderby.com



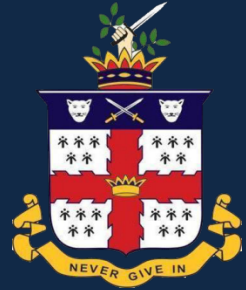
South of Derby Pakistan - Lawrence College Clock Tower - A

© South of Derby Ltd  
www.southofderby.com



South of Derby Pakistan - Lawrence College Clock Tower - B

© South of Derby Ltd  
www.southofderby.com

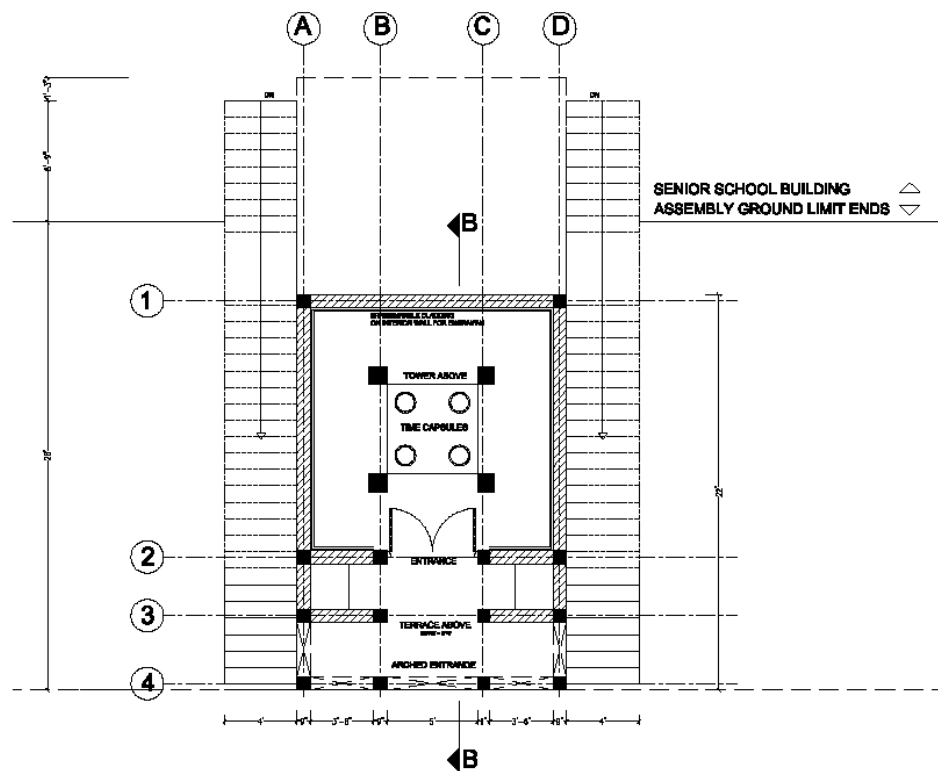
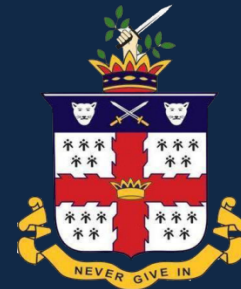


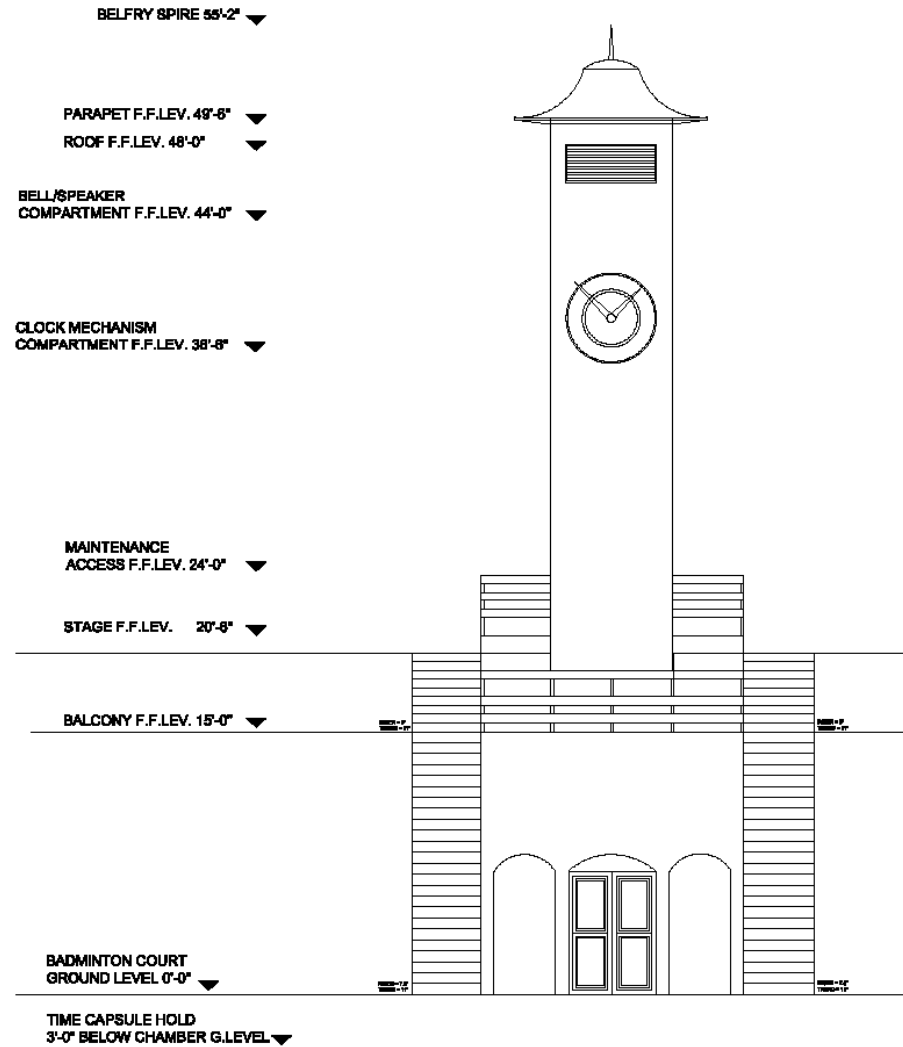
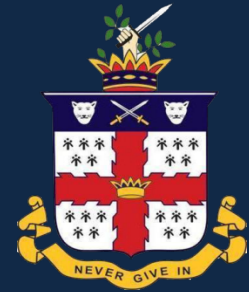
# Engineering Drawings

Of

# The Project







FRONT ELEVATION







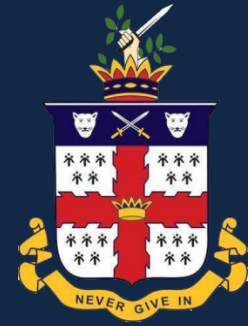
## Civil Works in Progress





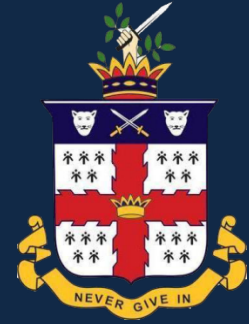
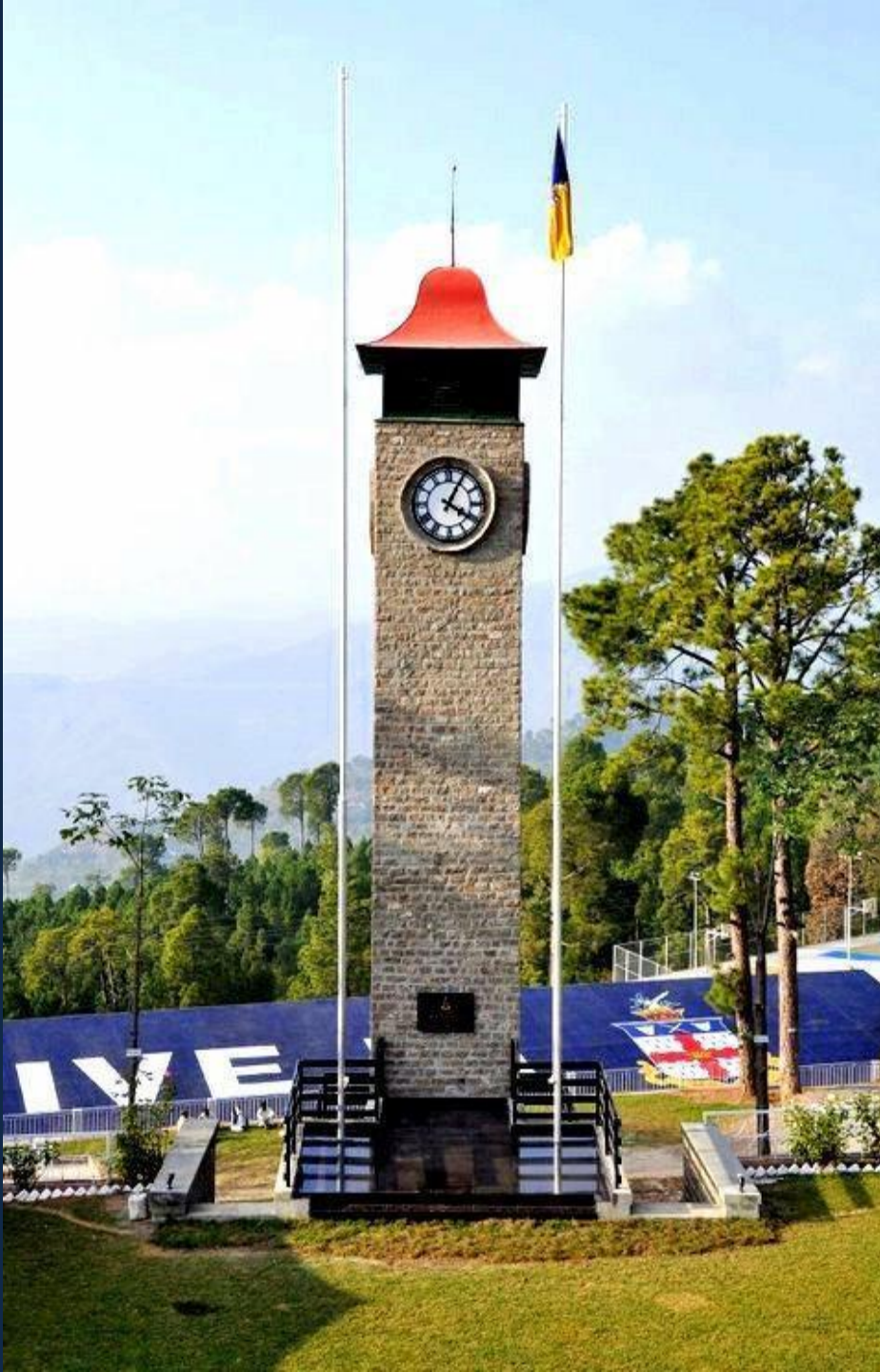
# Work in Progress





**Project Completed  
in 4 months**





# Tower Clock & Time Capsules

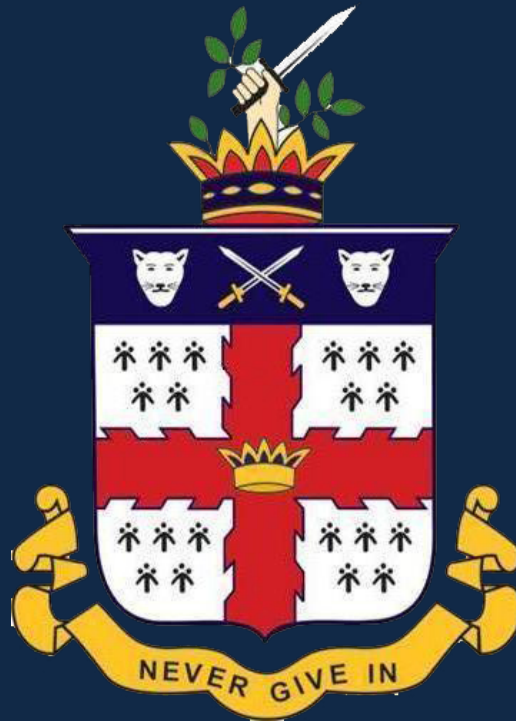
Ready for the  
150 Years  
Anniversary

. . . .Oct. 2010



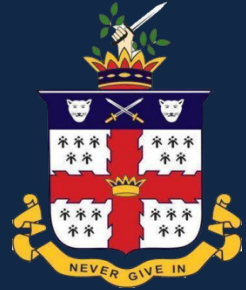
## Launching Ceremony

*Full Assembly attendance  
of Students & Teachers  
of LCGG*



Lawrence College, at a hundred  
and fifty years, deserves nothing  
less !





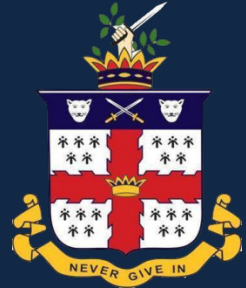
# Restoration Project of LCGG Chapel Tower Clock



# Lawrence College Chapel & Tower

Circa 1860

# Lawrence College Chapel Tower





**The Clock Mechanism by**  
**Installed in 1934**

*Smith of Derby*

